

Alexandra Schumacher

Alexandra Schumacher

born 1972 in Delmenhorst, Germany, lives and works in Berlin

Vita

2005 master class with Karin Sander, Kunsthochschule Berlin-Weissensee
2002/2003 Det Kongelige Danske Kunstakademi, Copenhagen, Denmark, sculpture (Morten Stræde)
2001-2004 Kunsthochschule Berlin-Weissensee, sculpture (Inge Mahn, Karin Sander), MFA
1998-2001 Hochschule für Gestaltung Offenbach am Main, sculpture (Wolfgang Luy)
1994-1997 Humboldt-Universität zu Berlin, mathematics, MSc
1993/1994 University College Dublin, Ireland, mathematics (DAAD scholarship)
1991-1994 Carl-von-Ossietzky-Universität Oldenburg, mathematics

Teaching

2009 teaching assignment for Fine Arts, Institute of Architecture, Technische Universität Berlin

Grants and Awards

2009 artist in residence, Künstlerdorf Schöppingen, Schöppingen
2009 project grant, Senate of Berlin, Berlin
2008 artist in residence, Altes Spital Solothurn, Solothurn, Switzerland
2007 workshop scholarship, Künstlerhäuser Worpswede, Worpswede
2007 project grant, Mart Stam Gesellschaft, Berlin
2007 artist in residence, USF, Bergen, Norway
2004 Mart Stam art prize for degree project, Berlin
2004 project grant, VZW Microproductie, Ghent, Belgium

Solo Exhibitions

2009 Raum für Verbesserung, Reinraum e.V., Düsseldorf
Conquest of Space, Vlasak Contemporary, Berlin
Alexandra Schumacher, Lokal.int, Biel, Switzerland
Werkschau, Architekturforum Touringhaus, Solothurn, Switzerland
2007 Prøverommet, BIT, Bergen, Norway
2006 Glamour of Efficiency, Stedefreund, Berlin (with Susanne Huth)
2005 Die Offenheit des geschlossenen Systems, AdKV booth, Art Frankfurt, Frankfurt/M
2004 Bergzelt, Projektraum A43, Kunsthochschule Berlin-Weissensee, Berlin

Group Exhibitions (selected)

2010 Anonymous Drawings Archive, Uferhallen, Berlin
The Hidden Room, Standpoint Gallery, London, U.K.
Les Chants de Maldoror, Stedefreund, Berlin (with Tamara Lorenz and Christof Zwiener)
Traacherous Path, participation in installation by Julia Staszak, Nature Morte, Berlin
INVITATION, Kunsthaus Erfurt, Erfurt
Preview, Galerie Vero Linzmeier, Berlin
Structures, Kunstverein das weisse haus, Vienna, Austria

2009 Zeigen, an audio tour through Berlin by Karin Sander, Temporäre Kunsthalle, Berlin
Club 89, Marks Blond R.f.z.K., Berne, Switzerland
Armella Show, organized by Kunsthaus Erfurt, Altes Innenministerium, Erfurt
Attention, Erbkönig, Gebäude, ... , Kunstverein Freunde aktueller Kunst, Zwickau
Non-taking Place, Lokal.int, Biel, Switzerland
Pleasure Beach, Stedefreund, Berlin (with Astrid Busch)
Destiny or Vaseline?, Showroom Berlin, Berlin

2008 Preview Berlin, Stedefreund, Tempelhof Airport, Berlin
V22 presents: The Wharf Road Project, Wenlock Building, London, U.K.
Art Athina, Stedefreund, Athens, Greece
Spielraum, Galerie Vero Wollmann, Stuttgart
The Weakest Link, Stedefreund, Berlin

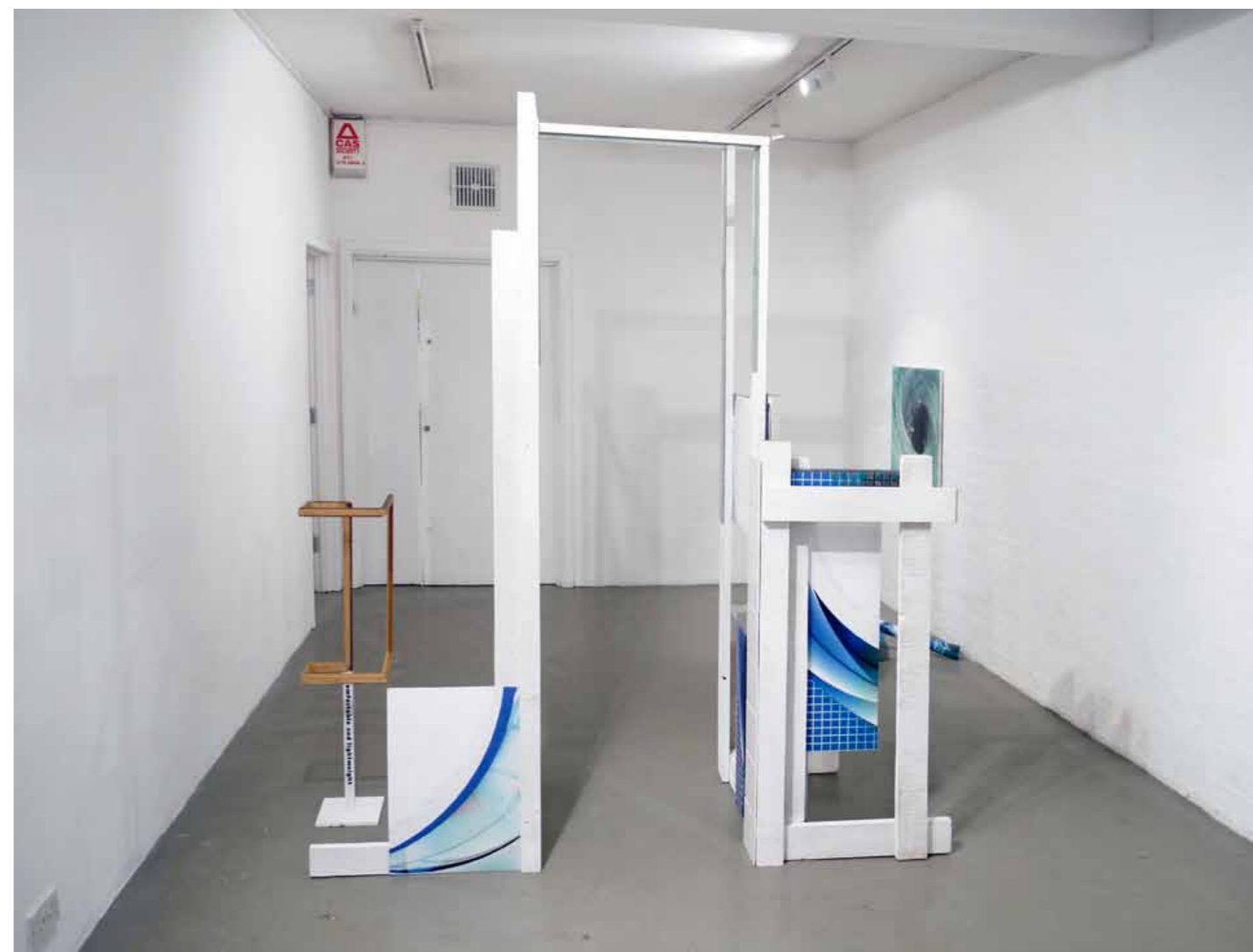
2007 Wir haben keine Probleme, Bergen Kunsthall, Bergen, Norway
Scheinriesen, Stedefreund, Berlin
Subsubnetcity, atelierberlin by Dina4 Projekte Munich, Berlin
Ars Vivendi, Altstadt Neu, Spangenberg
Alles Gute, liebe Kunst, Stedefreund, Berlin

2006 Anonyme Zeichner 3, blütenweiss, Berlin
President's XI, Galerie Ruth Leuchter, Düsseldorf
Never change a winning team, Müllerstr. 2 A, Berlin
Landnahme, Galerie Vero Wollmann, Stuttgart

2005 Vorfreude, participation in installation by Katja Pudor, Galerie Weißer Elefant, Berlin
Messe der Meister von Morgen, Karl-Marx-Allee 101, Berlin
Electric Ladyland, Umformwerk Prenzlauer Allee, Berlin
Freischwinger, Berlinische Galerie, Berlin

2004 Überqueren - bien roulé, Het Binnenhuis, Ghent, Belgium
Späte Freuden der Disziplin (degree show), Ritterhof, Berlin

2003 Udformation, Værløse Kommune sculpture park, Copenhagen, Denmark
Art From Kunsthochschule Berlin-Weissensee, Georg Fraser Gallery, Auckland, New Zealand
Forårsudstilling, Kunsthalle Charlottenborg, Copenhagen, Denmark
Formskrift, Kunstakademiets Udstillingsted, Copenhagen, Denmark



The Lock
 2010
 mixed media
 210 x 180 x 80 cm
 exhibition view
 The Hidden Space
 Standpoint Gallery, London



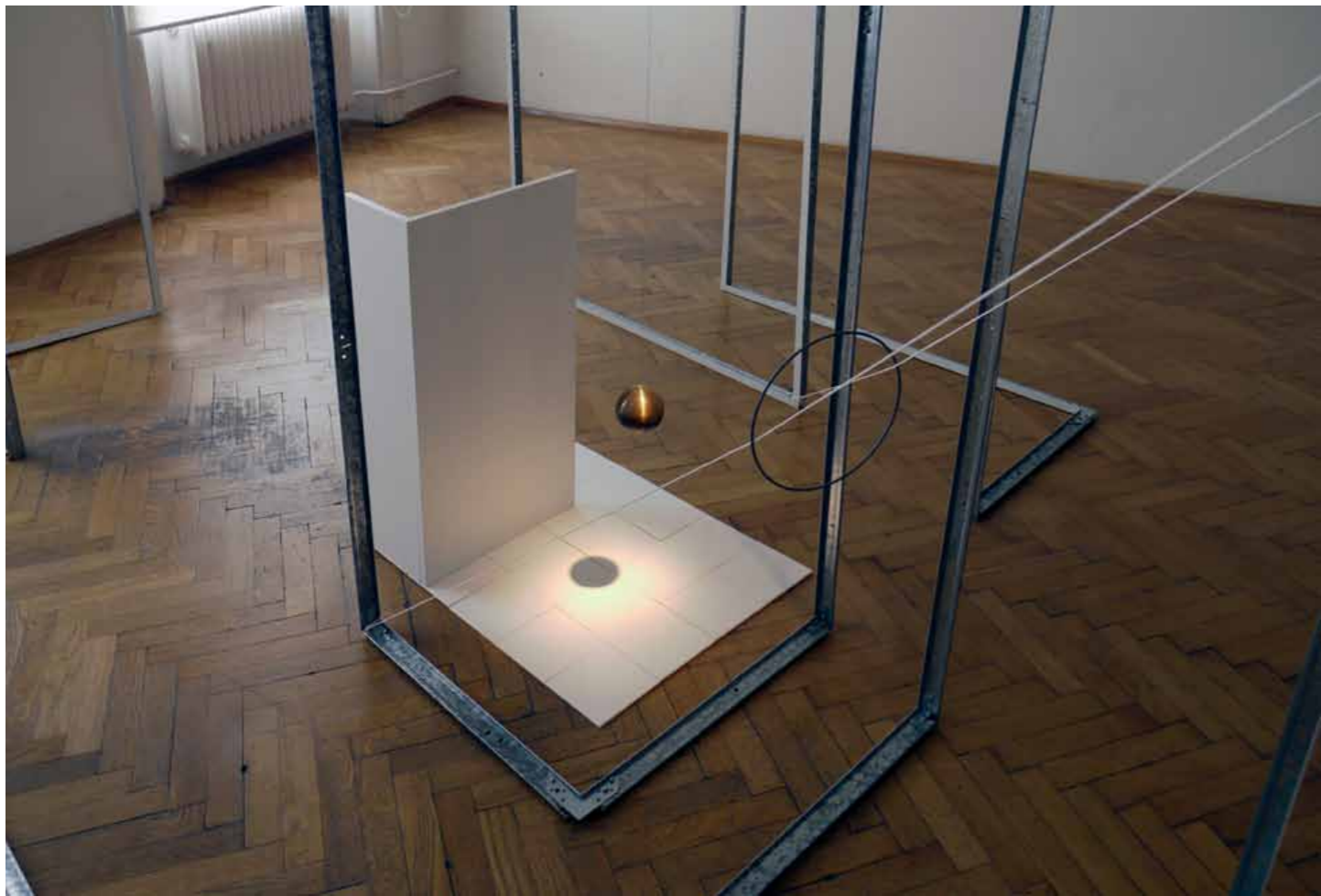
Welcome to the Continuum
2010
photo wallpaper, wood, c-print
dimensions variable
exhibition view
Les Chants de Maldoror, Stedefreund, Berlin



Facing the passing of time, the collector surrounds himself with the achievements and trophies of past successes.



Collecting, Remembering, Keeping
2010
Mixed Media
painting "Akira", 2008, by
Rebecca Michaelis, 200 x 200 cm
installation ca. 210 x 300 x 400 cm
exhibition view
INVITATION
Kunsthau Erfurt, Erfurt



The gaze, being the precondition for an imagination of space, and the knowledge about the inability to imagine spaces we cannot see, form the basis for this installation. Starting point is the far side of the Moon, which, averted from Earth, had always kept the fantasy of mankind busy. Until it was first photographed in 1959 by the Russian lunar probe Lunik 3 and then again in 1969 by the crew of the Apollo 11, broadcasted over television.

Conquest of Space II
(About the Flipside)
2010
metal, wood, tiles, string, c-print
340 x 200 x 245 cm

Structures
Kunstverein das weisse haus, Vienna



The aspiration of beauty is as old as mankind. Only recently did the progress in plastic surgery allow for taking fate into one's own hands in order to get a little closer to the ideal if one wasn't naturally beautiful. Or no longer. This is in line with the imperative of continuous improvement, which one has to apply to oneself, too, and the continuous need to represent. Life is a catwalk.

Room for Improvement
2009
mixed media
dimensions variable

Raum für Verbesserung
reinraum e.V., Düsseldorf



The title „Conquest of Space“ refers to a Science Fiction movie from the 50ies, in which, around a pathetic preachy story line, a trip to planet Mars is depicted. The special effects used to visualize the conquest of space seem today funnily obvious and like stage design, even though they must have been impressive back then.

Using similar means, the rather small exhibition space is extended. A grid, consisting of a standard ceiling system which looks like the starting plane in a 3D animation programme, continues illusionistically into the wall and opens an imaginary space for intellectual constructions.

Conquest of Space
2009
mixed media
dimensions variable

Conquest of Space
Vlasak Contemporary, Berlin



Constellation for Cooperation
2009

wood, glass, gypsum, aluminium,
acrylic glass, 190 x 180 x 115 cm

Threesome in the Jura, behind it the
Alps (The Legacy)
2009

hand proof on aluminium-dibond, 45
x 55 cm

An older Suggestion for a World Order
2009

two Inkjet prints, each 13 x 18 cm

Pleasure Beach
Stedefreund, Berlin



Work
2009
mixed media
dimensions variable

Werkschau
Architekturforum im
Touringhaus, Solothurn, Switzerland

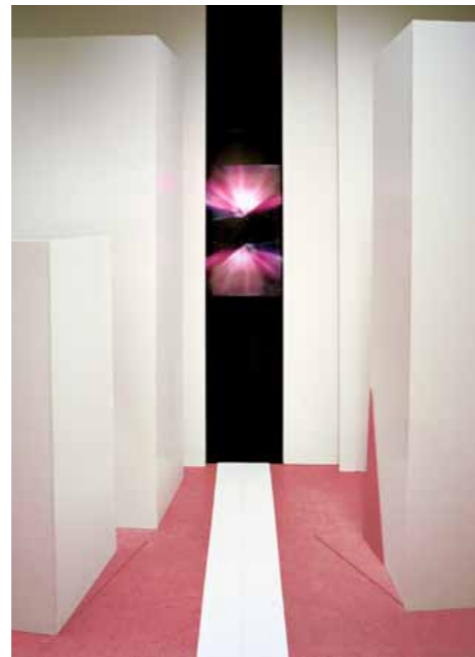


Office
2008
hand proof on aluminium, framed
34 x 44 cm

Monument to the Production
2008
hand proof on aluminium, framed
44 x 54 cm

Monument to the Workforce
2008
mixed media
58 x 154 x 93 cm

Preview Berlin 2008, Berlin

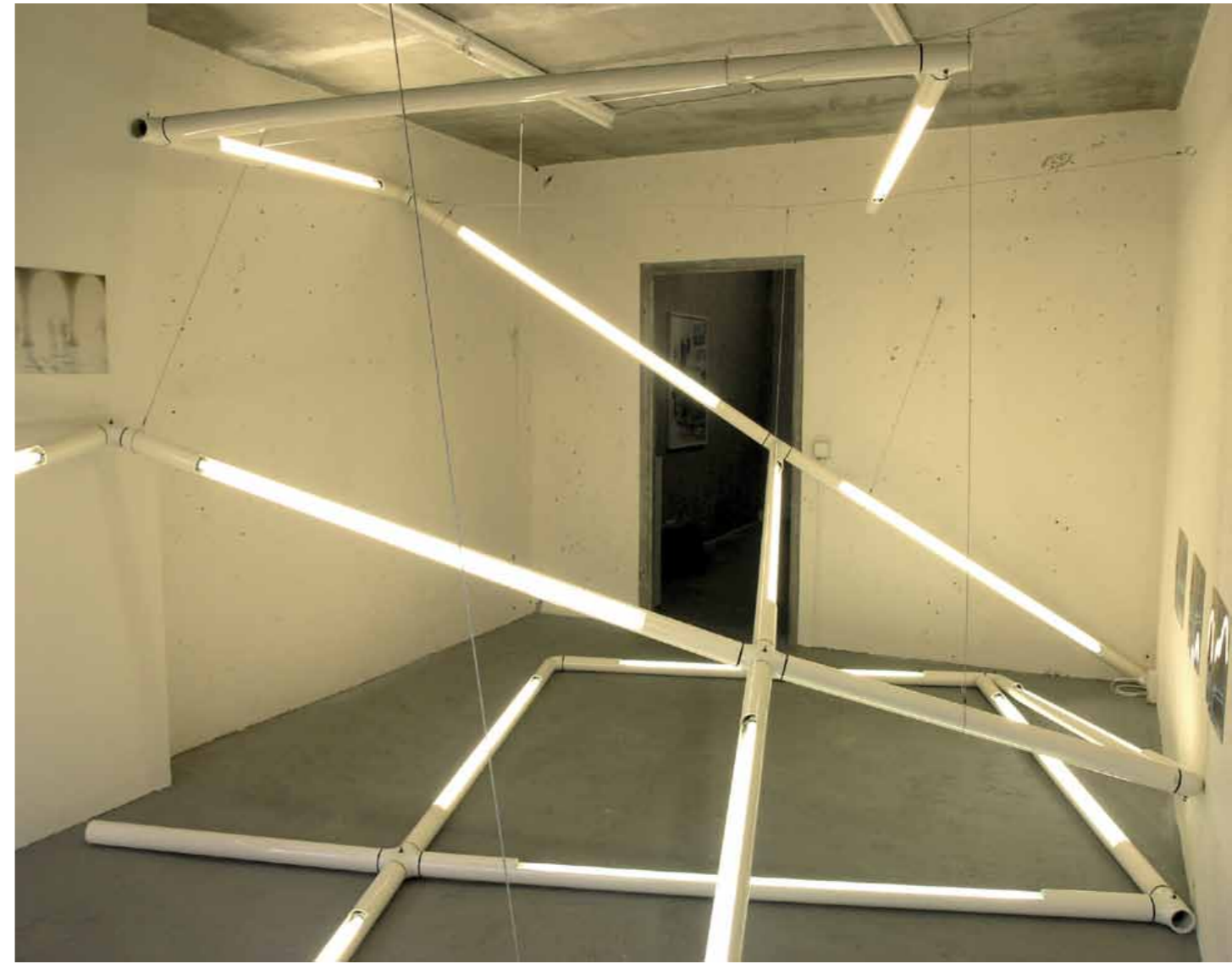


Boost yourself through self-reflection!
2008
c-print
15 x 20 cm

The Quality Gate
2008
Light box, lambda-print on acrylic
85 x 60 cm

Inclusive/exclusive
2008
wood, acrylic glass, 1-way mirror film,
neon lamps
210 x 340 x 160 cm

The Weakest Link,
Stedefreund, Berlin



Iterative Optimization of the Systematics I + II
2006
neon lamps, digital prints
dimensions variable

Glamour of Efficiency
Stedefreund, Berlin



Iterative Optimization of the Systematics III
2007
neon lamps, light boxes
dimensions variable

Wir haben keine Probleme
Bergen Kunsthall, Bergen, Norway



Basis Swap
2007
c-print
30 x 40 cm



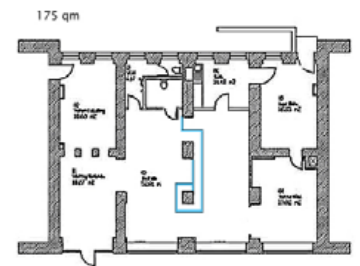
Untitled (Frames)
2007
digital prints, slide projection
dimensions variable

Alles Gute, liebe Kunst
Stedefreund, Berlin



Spatial Distribution II
2005
drywall framing, fiberboard
535 x 400 x 260 cm

Freischwinger
Berlinische Galerie, Berlin



Dramaturgy
2005
drywall, drywall framing, wall paint
approx. 200 x 520 x 320 cm
Messe der Meister von Morgen
Karl-Marx-Allee 101, Berlin



The Openness of the Closed System
2005
drywall framing, chipboard
400 x 400 x 350 cm
AdKV booth, Art Frankfurt
Frankfurt am Main



Spatial Distribution
2004
drywall, drywall framing, wall paint
260 x 280 x 260 cm
Späte Freuden der Disziplin
Ritterhof, Berlin